

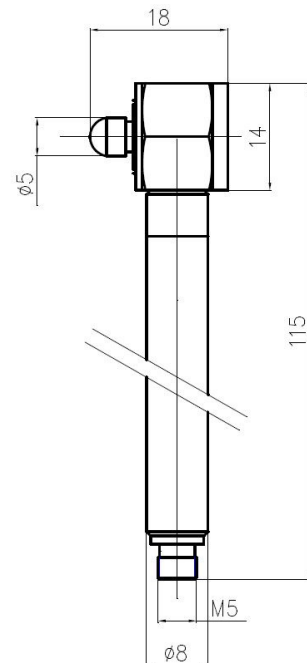
- General purpose IEPE Hammer
- Range 50N
- Sensitivity 100mV/N
- Kit includes impact tips and 2m cable
- M5 Microdot connector
- Carry case included

The VTH50 is the smallest of the general purpose IEPE Impact Hammer range offered by Kemo Ltd.

With a range of just 50N and a sensitivity of 100mV/N it is perfectly suited to applications requiring the excitation of small lightweight products such as PCB assemblies, small product casings.

The hammer is supplied in a carry case and also includes a 2m cable with a BNC plug termination. In addition 4 impact tips:

- Stainless Steel
- Aluminium
- Nylon
- Rubber

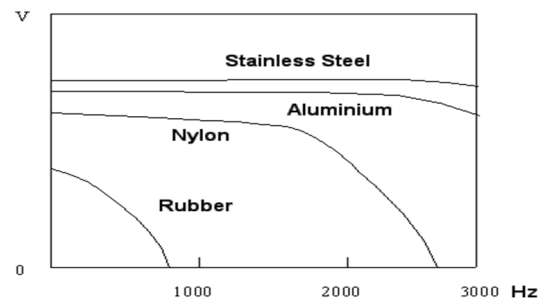


VTH50	Metric	Imperial
Sensitivity ($\pm 10\%$)	100mV/N	446mV/lbf
Measuring Range	50N	11.24lbf
Non-linearity	$\leq 1\%$	
Resolution	2mN(rms)	
Resonant Frequency	$\geq 70\text{kHz}$	
Hammer head Weight	15gm	0.53oz
Hammer weight (total)	80g	2.82oz
Hammer Head \varnothing	14mm	0.55in
Hammer Length	115mm	5.12in
Output Connector	M5	
Tips Supplied	Rubber, nylon, aluminium, steel	
Excitation voltage	+18 to +28V	
Constant Current	2-10mA	
Bias Voltage	10-14VDC	
Output Impedance	$\leq 100\Omega$	

Typical comparative frequency response

Pulse width and frequency response vary with hammerhead materials.

This drawing is for reference only



Due to continued product development Kemo Limited reserve the right to change specification without notice.

- General purpose IEPE Hammer
- Range 200N
- Sensitivity 25mV/N
- Kit includes impact tips and 2m cable
- BNC connector
- Carry case included

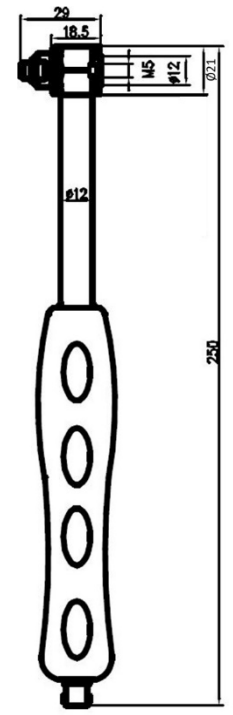


The VTH200 is a lightweight general purpose IEPE Impact Hammer range offered by Kemo Ltd.

With a range of 200N and a sensitivity of 25mV/N it is perfectly suited to applications requiring the excitation of small lightweight products such as PCB assemblies, small product casings.

The hammer is supplied in a carry case and also includes a 2m cable with a BNC plug termination. In addition 4 impact tips:

- Stainless Steel
- Aluminium
- Nylon
- Rubber

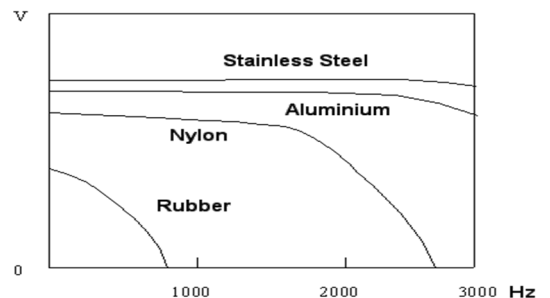


VTH200	Metric	Imperial
Sensitivity ($\pm 10\%$)	25mV/N	111.5mV/lbf
Measuring Range	200N	44.96lbf
Non-linearity	$\leq 1\%$	
Resolution	6mN(rms)	
Resonant Frequency	$\geq 60\text{kHz}$	
Hammer head Weight	28gm	1oz
Hammer weight (total)	110g	3.88oz
Hammer Head \varnothing	21mm	0.71in
Hammer Length	250mm	9.84in
Output Connector	BNC	
Tips Supplied	Rubber, nylon, aluminium, steel	
Excitation voltage	+18 to +28V	
Constant Current	2-10mA	
Bias Voltage	10-14VDC	
Output Impedance	$\leq 100\Omega$	

Typical comparative frequency response

Pulse width and frequency response vary with hammerhead materials.

This drawing is for reference only



Due to continued product development Kemo Limited reserve the right to change specification without notice.

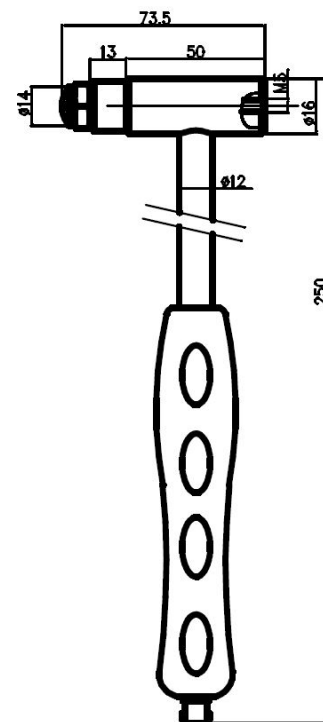
- General purpose IEPE Hammer
- Range 2000N
- Sensitivity 2.5mV/N
- Kit includes impact tips and 2m cable
- BNC connector
- Carry case included



The VTH2KN is a mid range general purpose IEPE Impact Hammer range offered by Kemo Ltd. With a range of 2000N and a sensitivity of 2.5mV/N it is well suited to a wide range of structural testing applications from lightweight to slightly stiffer testing work.

The hammer is supplied in a carry case and also includes a 2m cable with a BNC plug termination. In addition 4 impact tips:

- Stainless Steel
- Aluminium
- Nylon
- Rubber

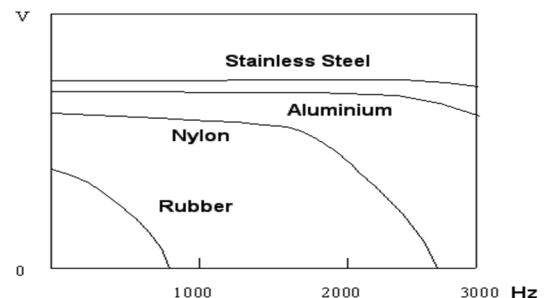


VTH2KN	Metric	Imperial
Sensitivity ($\pm 10\%$)	2.5mV/N	11.15mV/lbf
Measuring Range	2000N	449lbf
Non-linearity	$\leq 1\%$	
Resolution	50mN(rms)	
Resonant Frequency	$\geq 55\text{kHz}$	
Hammer head Weight	80gm	2.8oz
Hammer weight (total)	165g	5.8oz
Hammer Head \varnothing	16mm	0.63in
Hammer Length	250mm	9.84in
Output Connector	BNC	
Tips Supplied	Rubber, nylon, aluminium, steel	
Excitation voltage	+18 to +28V	
Constant Current	2-10mA	
Bias Voltage	10-14VDC	
Output Impedance	$\leq 100\Omega$	

Typical comparative frequency response

Pulse width and frequency response vary with hammerhead materials.

This drawing is for reference only



Due to continued product development Kemo Limited reserve the right to change specification without notice.

- General purpose IEPE Hammer
- Range 5000N
- Sensitivity 1mV/N
- Kit includes impact tips and 2m cable
- BNC connector
- Carry case included

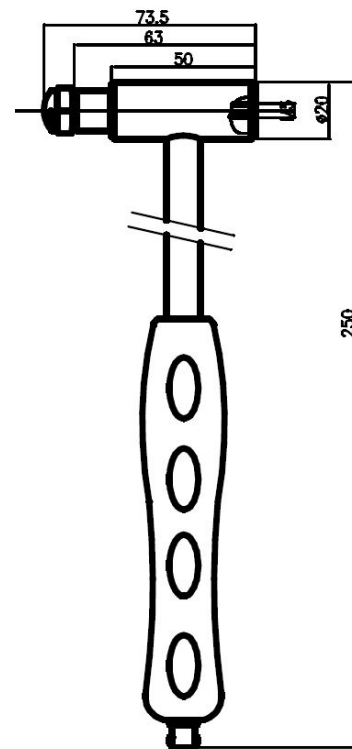


The VTH5KN is a general purpose IEPE Impact Hammer range offered by Kemo Ltd.

With a range of 5000N and a sensitivity of 1mV/N it is well suited to a wide range of testing applications and is considered by many as the most effective mid range general purpose hammer.

The hammer is supplied in a carry case and also includes a 2m cable with a BNC plug termination. In addition 4 impact tips:

- Stainless Steel
- Aluminium
- Nylon
- Rubber

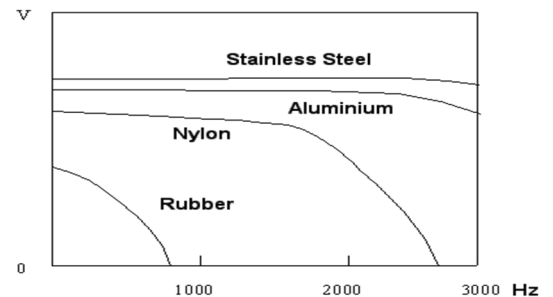


VTH5KN	Metric	Imperial
Sensitivity (±10%)	1mV/N	4.46mV/lbf
Measuring Range	5000N	1124.1lbf
Non-linearity	≤1%	
Resolution	100mN(rms)	
Resonant Frequency	≥55kHz	
Low Frequency	1Hz	
Hammer head Weight	120gm	4.2oz
Hammer weight (total)	210g	7.41oz
Hammer Head Ø	20mm	0.79in
Hammer Length	250mm	9.84in
Output Connector	BNC	
Tips Supplied	Rubber, nylon, aluminium, steel	
Excitation voltage	+18 to +28V	
Constant Current	2-10mA	
Bias Voltage	10-14VDC	
Output Impedance	≤100Ω	

Typical comparative frequency response

Pulse width and frequency response vary with hammerhead materials.

This drawing is for reference only



Due to continued product development Kemo Limited reserve the right to change specification without notice.

- General purpose IEPE Hammer
- Range 10000N
- Sensitivity 0.5mV/N
- Kit includes impact tips and 2m cable
- BNC Microdot connector
- Carry case included

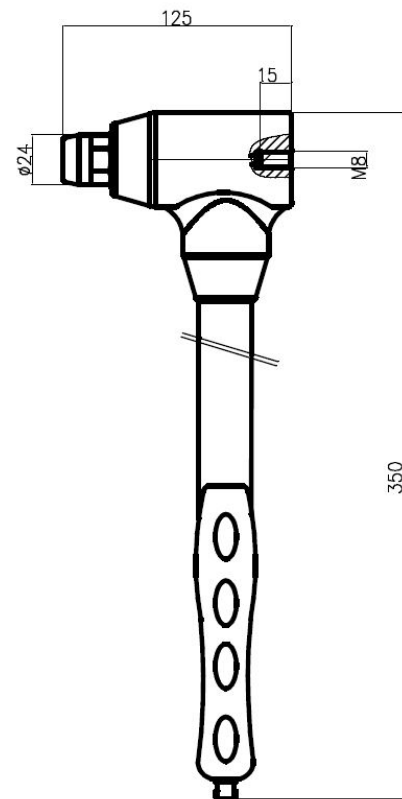


The VTH10KN is the first of the heavy duty general purpose impact hammers, offering an increase in size, weight and force.

Suited to the testing and excitation of larger heavier structures.

The hammer is supplied in a carry case and also includes a 2m cable with a BNC plug termination. In addition 3 impact tips:

- Soft
- Medium
- Hard

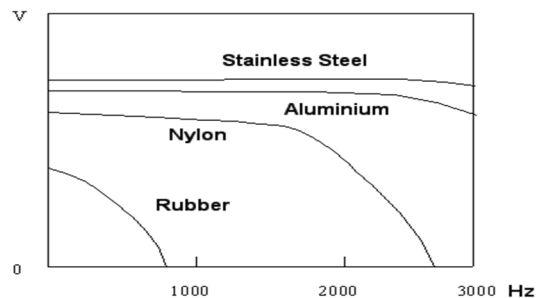


VTH10KN	Metric	Imperial
Sensitivity (±10%)	0.5mV/N	2.23mV/lbf
Measuring Range	10000N	2248.1lbf
Non-linearity	≤1%	
Resolution	250mN(rms)	
Resonant Frequency	≥45kHz	
Hammer head Weight	445gm	15.7oz
Hammer weight (total)	920g	32.45oz
Hammer Head Ø	32mm	1.26in
Hammer Length	350mm	13.38in
Output Connector	BNC	
Tips Supplied	Soft, medium, hard	
Excitation voltage	+18 to +28V	
Constant Current	2-10mA	
Bias voltage	10-14VDC	
Output Impedance	≤100Ω	

Typical comparative frequency response

Pulse width and frequency response vary with hammerhead materials.

This drawing is for reference only



Due to continued product development Kemo Limited reserve the right to change specification without notice.

- General purpose IEPE Hammer
- Range 20000N
- Sensitivity 0.25mV/N
- Kit includes impact tips and 2m cable
- BNC connector
- Carry case included

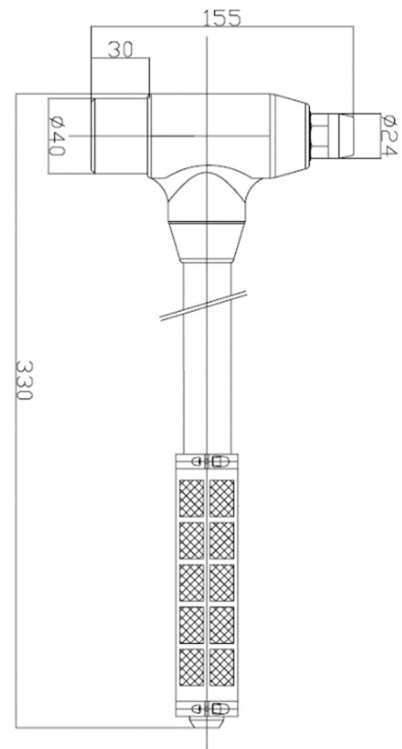


The VTH20KN is the middle of our range of heavyweight general purpose IEPE impact hammers.

It is suited to the testing of large heavyweight structures that require a much greater level of force to excite the structure.

The hammer is supplied in a carry case and also includes a 2m cable with a BNC plug termination. In addition 3 impact tips:

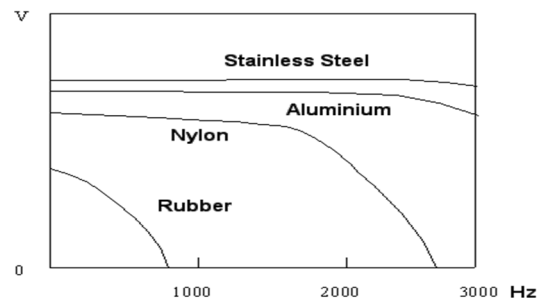
- Soft
- Medium
- Hard



Typical comparative frequency response

Pulse width and frequency response vary with hammerhead materials.

This drawing is for reference only



VTH20KN	Metric	Imperial
Sensitivity ($\pm 10\%$)	0.25mV/N	1.12mV/lbf
Measuring Range	20000N	4496.2.1lbf
Non-linearity	$\leq 1\%$	
Resolution	450mN(rms)	
Resonant Frequency	$\geq 45\text{kHz}$	
Hammer head Weight	445gm	15.7oz
Hammer weight (total)	920g	32.45oz
Hammer Head \varnothing	40mm	1.57in
Hammer Length	330mm	13in
Output Connector	BNC	
Tips Supplied	Soft, medium, hard	
Excitation voltage	+18 to +28V	
Constant Current	2-10mA	
Bias voltage	10-14VDC	
Output Impedance	$\leq 100\Omega$	

Due to continued product development Kemo Limited reserve the right to change specification without notice.

- General purpose IEPE Hammer
- Range 50000N
- Sensitivity 0.1mV/N
- Kit includes impact tips and 2m cable
- BNC connector
- Carry case included

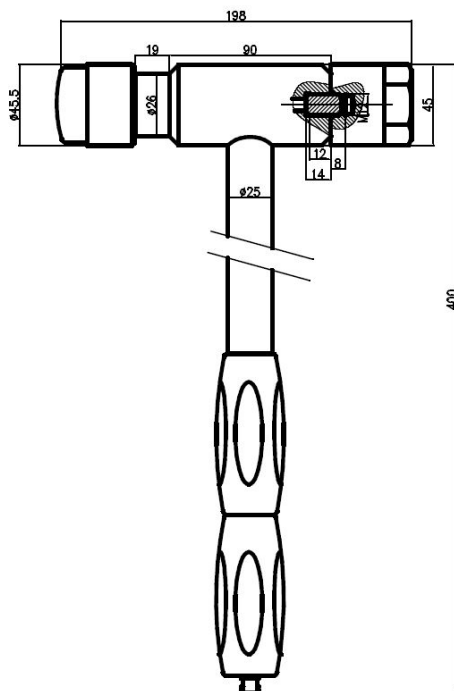


The VTH50 is the largest of the heavyweight general purpose IEPE impact hammers offered by Kemo Ltd and provides a maximum range of 50,000N of impact force.

The VTH50KN is suitable for the excitation of large heavyweight and stiff structures.

The hammer is supplied in a carry case and also includes a 2m cable with a BNC plug termination. In addition 3 impact tips:

- Soft
- Medium
- Hard

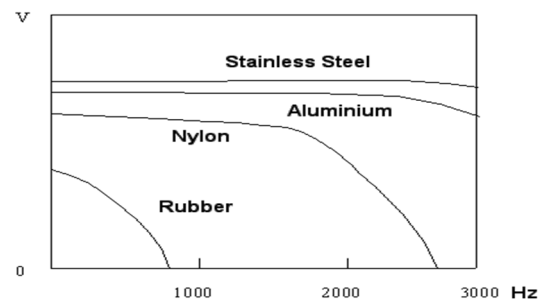


VTH50KN	Metric	Imperial
Sensitivity ($\pm 10\%$)	0.1mV/N	0.446mV/lbf
Measuring Range	50000N	11240.6lbf
Non-linearity	$\leq 1\%$	
Resolution	1000mN(rms)	
Resonant Frequency	$\geq 45\text{kHz}$	
Hammer head Weight	1000gm	35.27oz
Hammer weight	1300g	45.86oz
Hammer Head \varnothing	45mm	1.77in
Hammer Length	400mm	15.75in
Output Connector	BNC	
Tips Supplied	Soft, medium, hard	
Excitation voltage	+18 to +28V	
Constant Current	2-10mA	
Bias Voltage	10-14VDC	
Output Impedance	$\leq 100\Omega$	

Typical comparative frequency response

Pulse width and frequency response vary with hammerhead materials.

This drawing is for reference only



Due to continued product development Kemo Limited reserve the right to change specification without notice.